



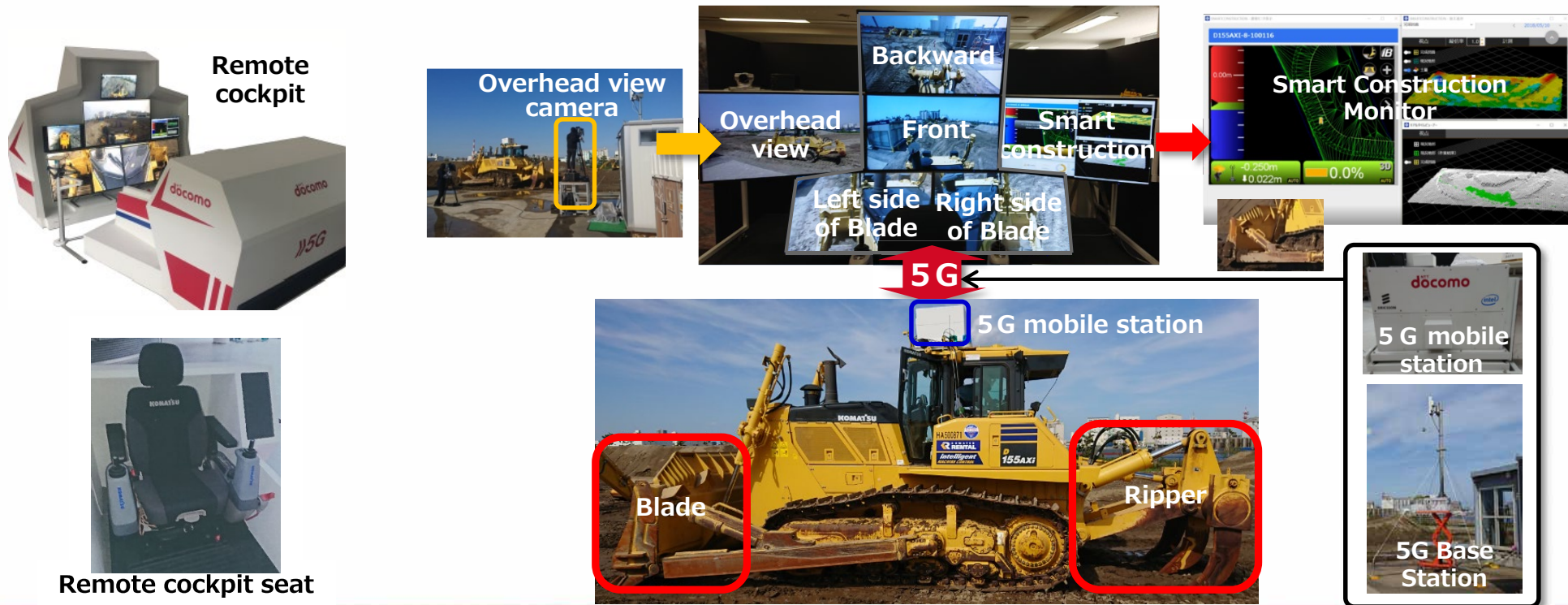
Smart Construction Powered by 5G & IoT

5G-enabled remote machinery operation and IoT-based site management to realize a safer, more productive worksite



Smart Construction Powered by 5G & IoT

DOCOMO is leveraging 5G technology to enable remote control of construction machinery, thus to overcome labor shortages and safely conduct work at disaster sites.



The Remote Control Construction Machinery

- Through high-precision and low-latency video streaming via a 5G connection from the construction machinery, the remote operator can confirm detailed conditions of the construction site.
- The system allows operators to switch between construction sites from a single location, thereby relieving labor shortages.

