

# Tohoku – Pacific Ocean Earthquake: Current Status and Restoration Plan



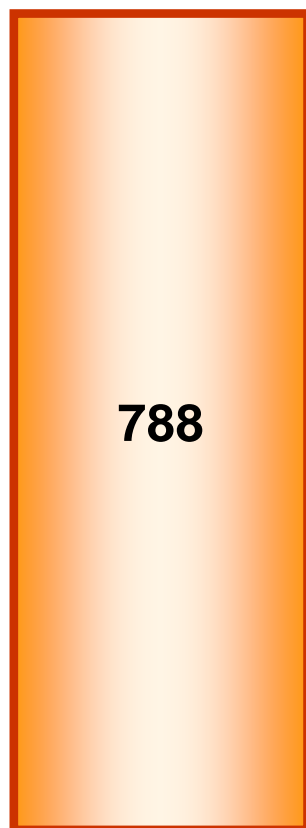
NTT DOCOMO, INC.

March 30, 2011

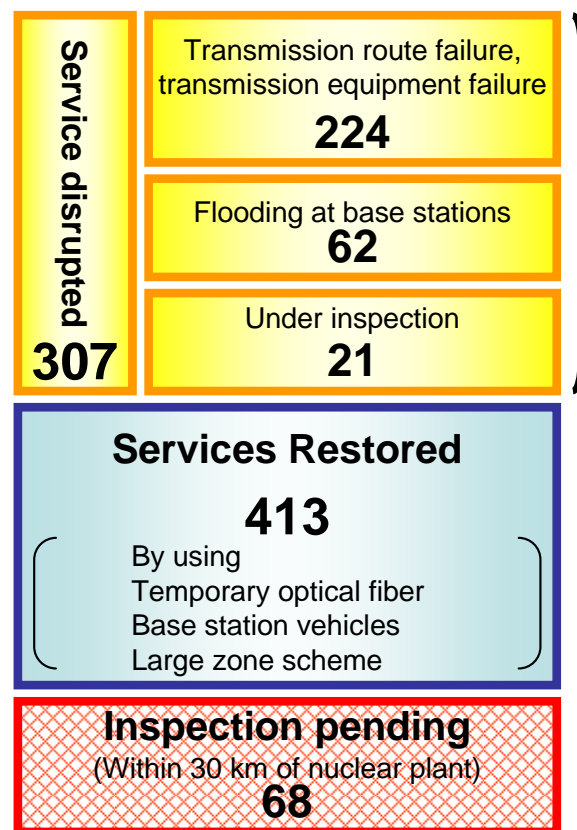
# Damage to Base Stations & Restoration Measures

- 788 base stations requiring inspection as of March 22
- Immediately inspected disrupted base stations & implemented temporary repairs
- Services restored at 413 base stations by March 28
- Services disrupted at 307 base stations as of March 28

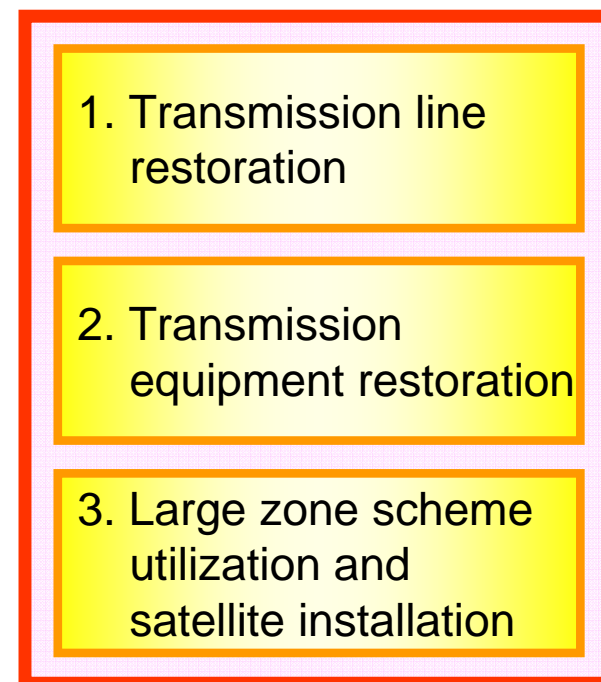
## Base Stations Requiring Inspection (March 22)



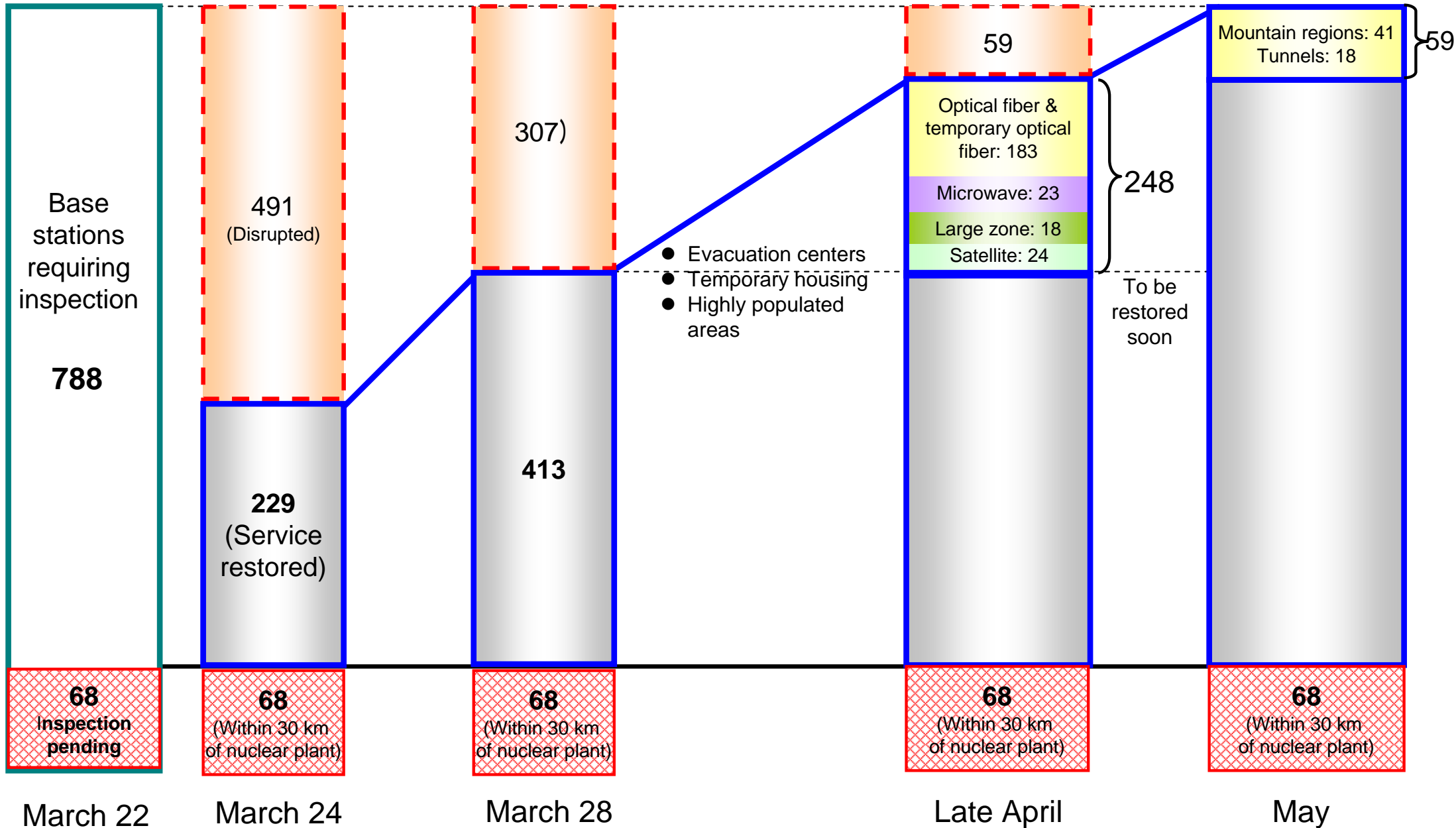
## Inspection Results (March 28)



## Key Service Restoration Measures



# Restoration Progress & Outlook



# Base Stations Expected to be Restored (1/2)

## Service Restoration Schedules (248)

	Scheduled for Completion by Late April	
<b>Iwate</b>	<b>137</b>	
	Mid-April	Late April
	89	48
<b>Miyagi</b>	<b>89</b>	
	Mid-April	Late April
	61	28
<b>Fukushima</b>	<b>22</b>	
	Mid-April	Late April
	0	22
<b>Total</b>	<b>248</b>	
	Mid-April	Late April
	150	98

# Base Stations Expected to be Restored (2/2)

## Service Restoration Schedules (59)

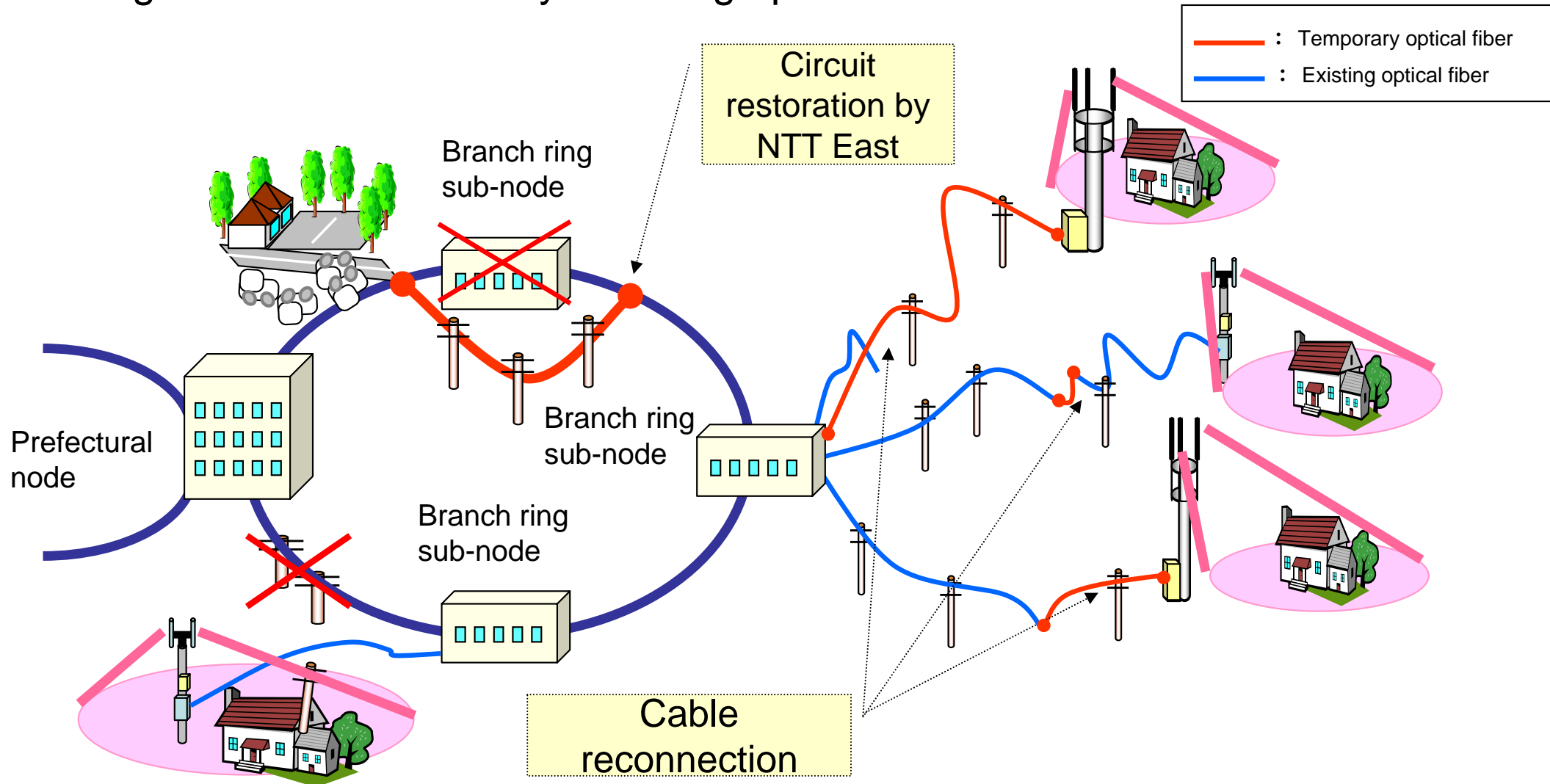
	Scheduled for Completion by May		
		Mountain Regions	Tunnels
<b>Iwate</b>	47	37	10
<b>Miyagi</b>	8	1	7
<b>Fukushima</b>	4	3	1
<b>Total</b>	59	41	18

**Restoration Schedule Undetermined: 68**  
(Within 30-km of Fukushima nuclear plant )

# Service Restoration Measures (1/3)

## 1. Optical fiber and temporary optical fiber

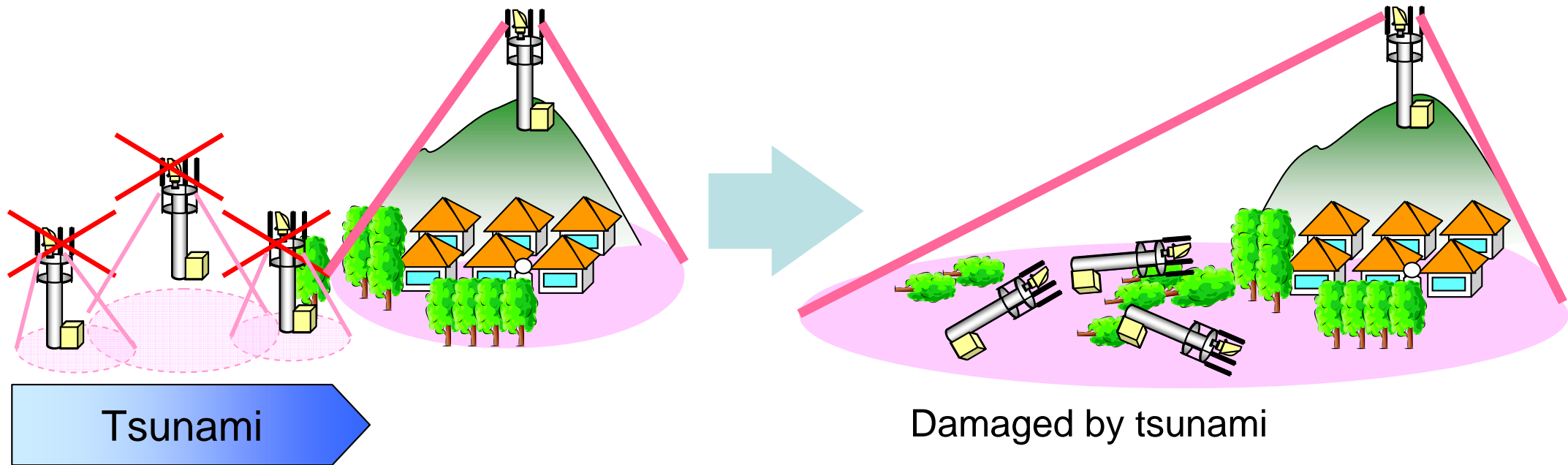
Restoring transmission lines by installing optical fiber cables



# Service Restoration Measures (2/3)

## 2. Large zone scheme

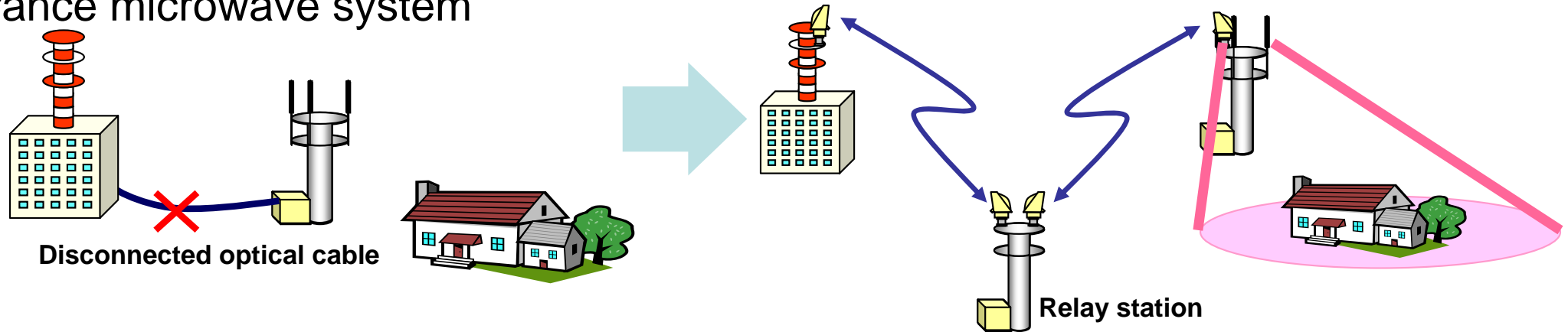
Utilizing large zone scheme applied to high-elevation base stations to restore services in affected areas



# Service Restoration Measures (3/3)

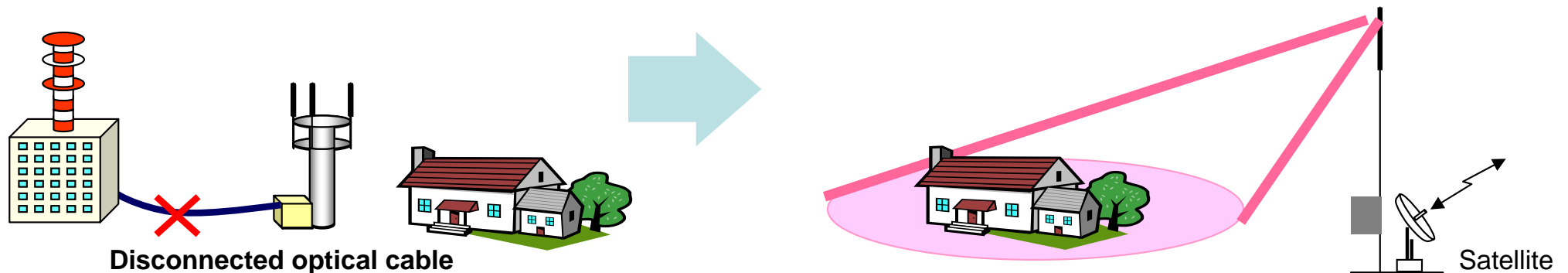
## 3. Entrance microwave system

Restoring relay transmission lines and access transmission lines by utilizing entrance microwave system



## 4. Satellite circuits

Restoring service by installing satellite circuits







# Disaster Recovery Programs

The following disaster recovery programs will be extended

Program		Before	After
1	Extension of walk-in payment deadline for charges (extension approximately one month)	Payment deadline of May 2 for March bills	Payment deadline of May 2 for March bills Payment deadline of May 31 for April bills
2	Mobile phone repair charges for half the regular price	Available until April 11	Available until May 31
3	Free data restoring service for water-soaked mobile phones (Regular price: 5,250 yen including tax)		
4	Special discount at time of mobile phone purchase (maximum of 10,500 yen including tax)		
5	No fee for FOMA SIM card reissuance		

Note: Programs 2, 3, 4 and 5 are offered at docomo Shops nationwide.

# Attachment 1 Base Station Equipments and Base Stations

- Currently reports are based on the number of disrupted base station equipments
- In the future, the number of disrupted base stations is to be updated as recovery efforts are made at each base station sites

As of March 28, 2011

	Number of Disrupted Base Station Equipments	Number of Disrupted Base Stations
Iwate	220	184
Miyagi	180	97
Fukushima	130	94*
Total	530	375*

Base station: A site where base station equipments are installed.  
There may be instances where there are multiple base station equipments (i.e. 2GHz & 800MHz) installed in a single base station.

\*Includes 68 disrupted base stations located within 30-km of Fukushima nuclear plant



1. Base station facility (Matsuhima-Nobiru, Miyagi)



2. Transmission facility (Noda-mura, Iwate)

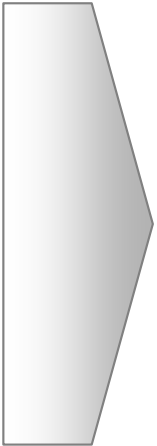
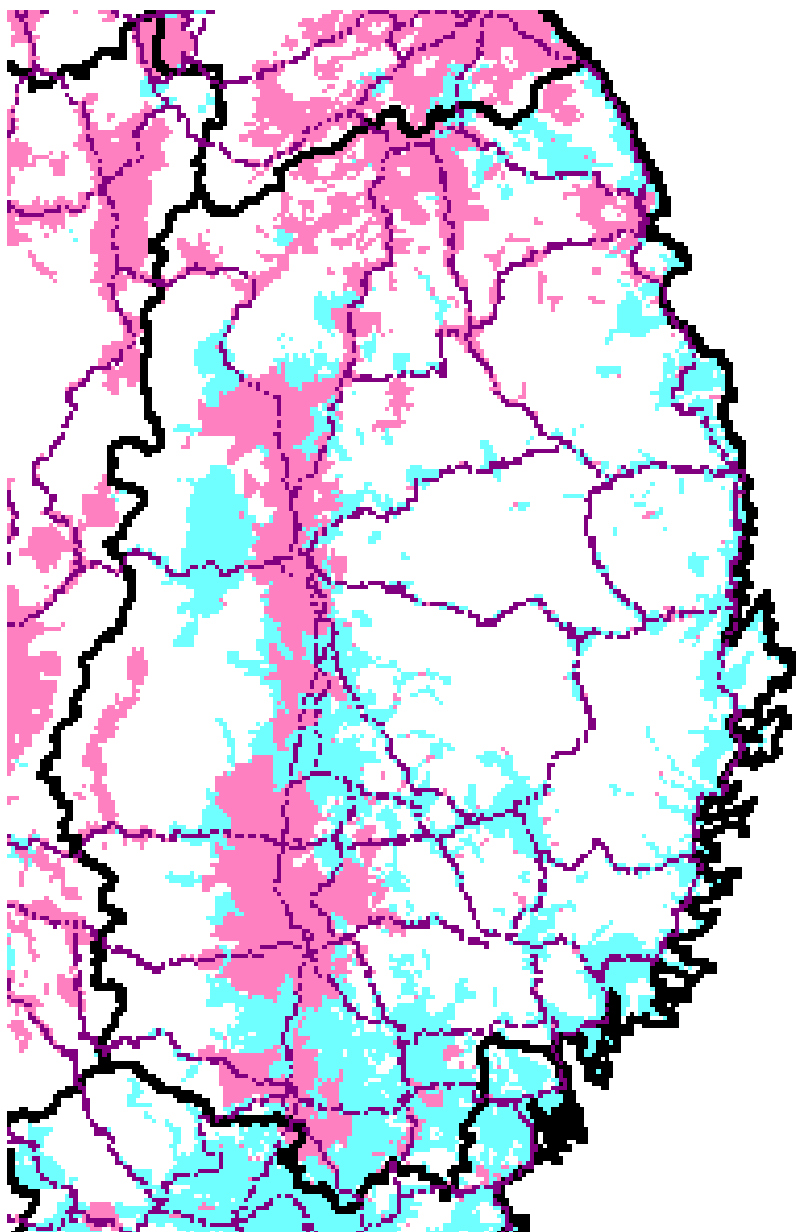


3. Base station facility (Ishinomaki-Midori-cho, Miyagi)

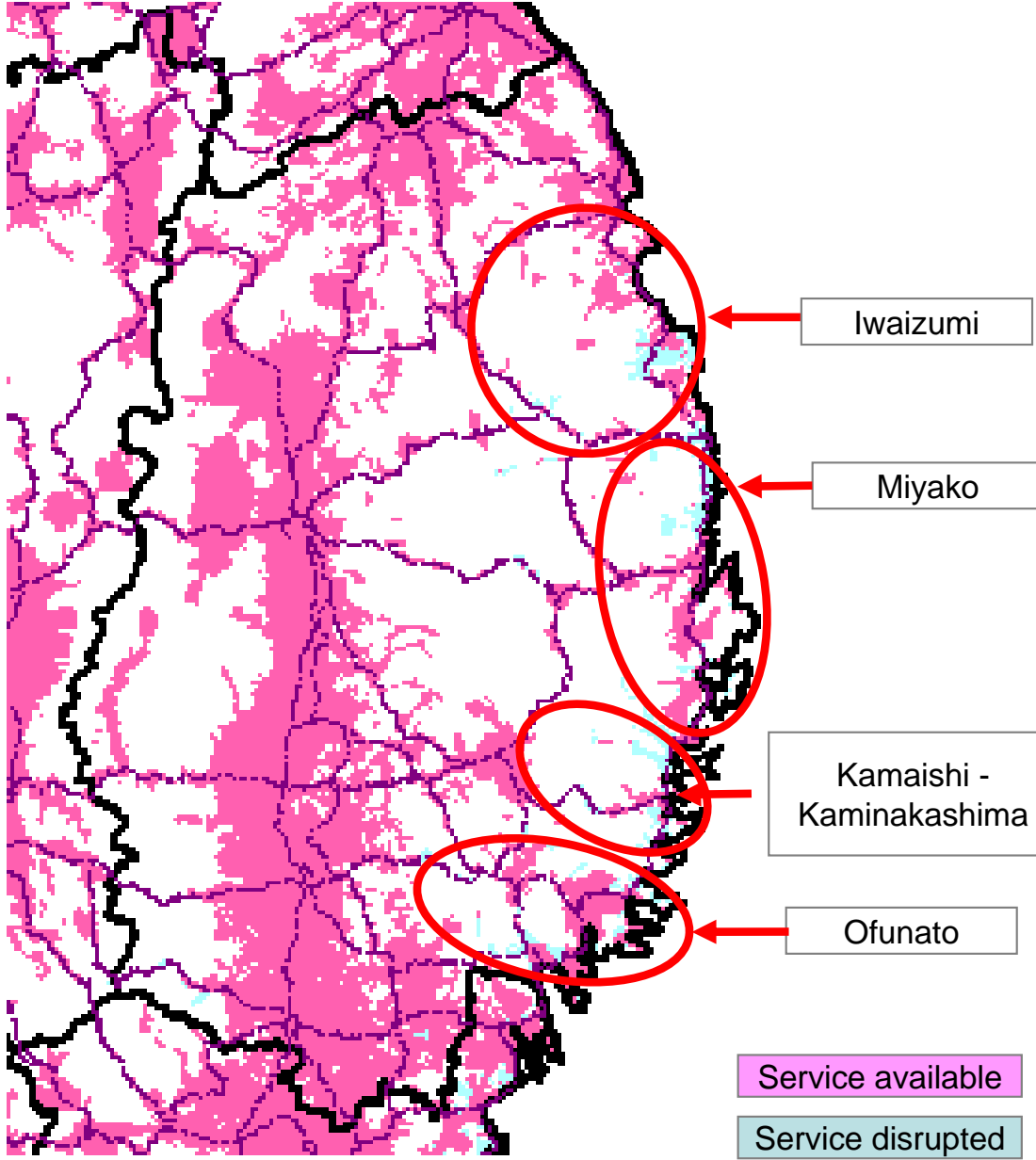


4. docomo Shop (Ishinomaki-Higashi, Miyagi)

6:00 p.m. on Sunday, March 13



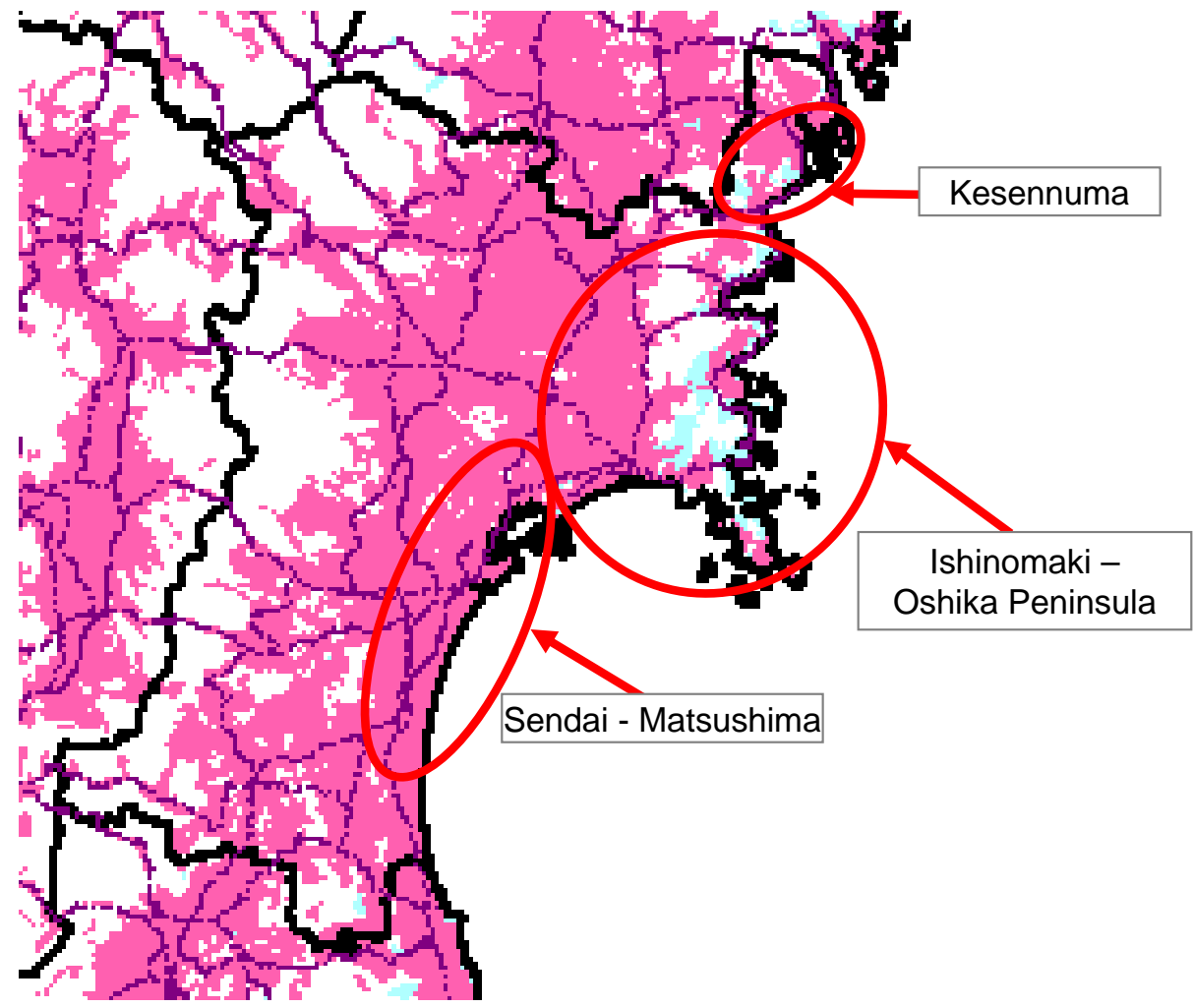
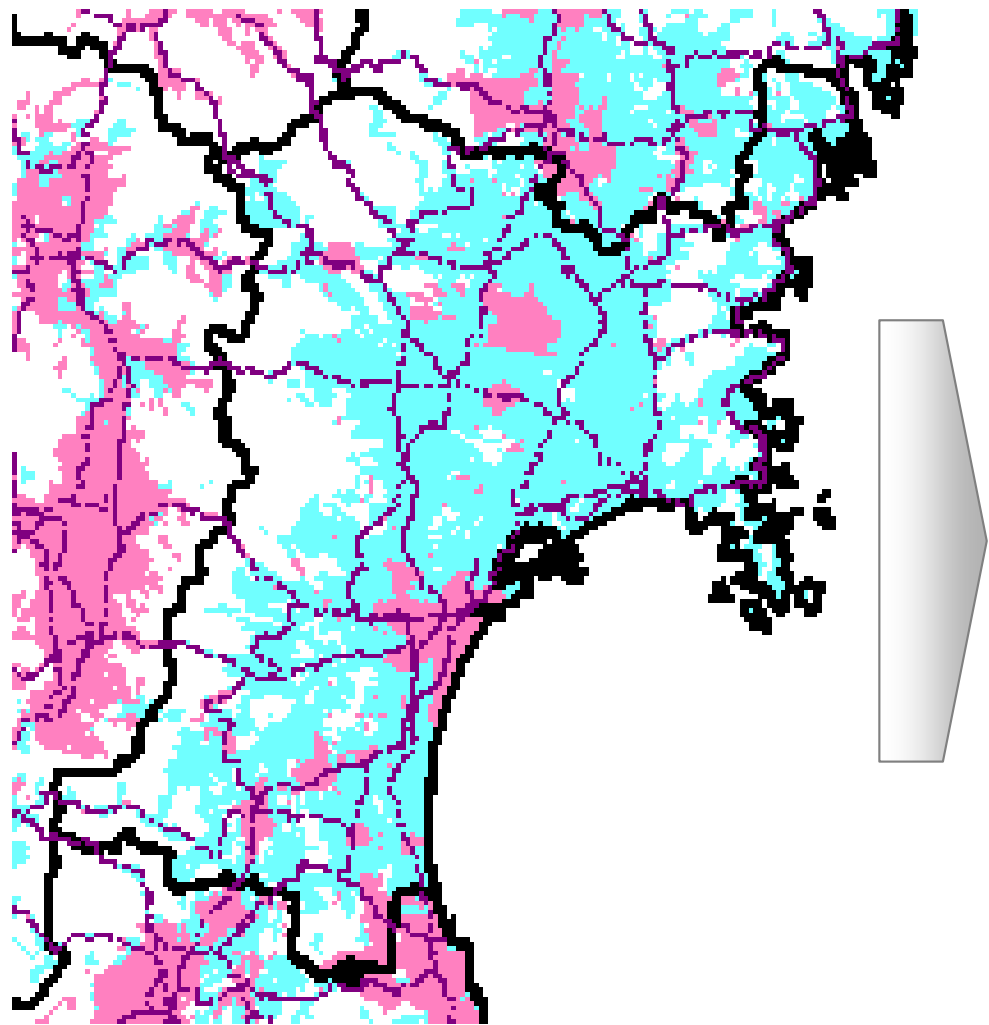
4:00 a.m. on Monday, March 28





6:00 p.m. on Sunday, March 13

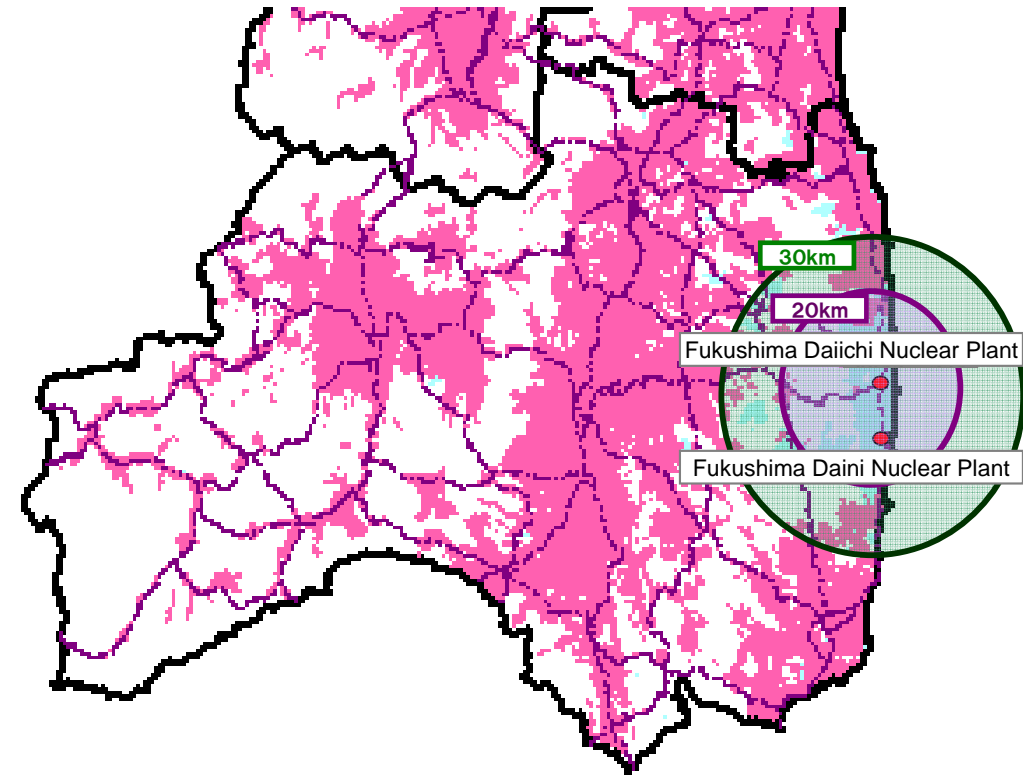
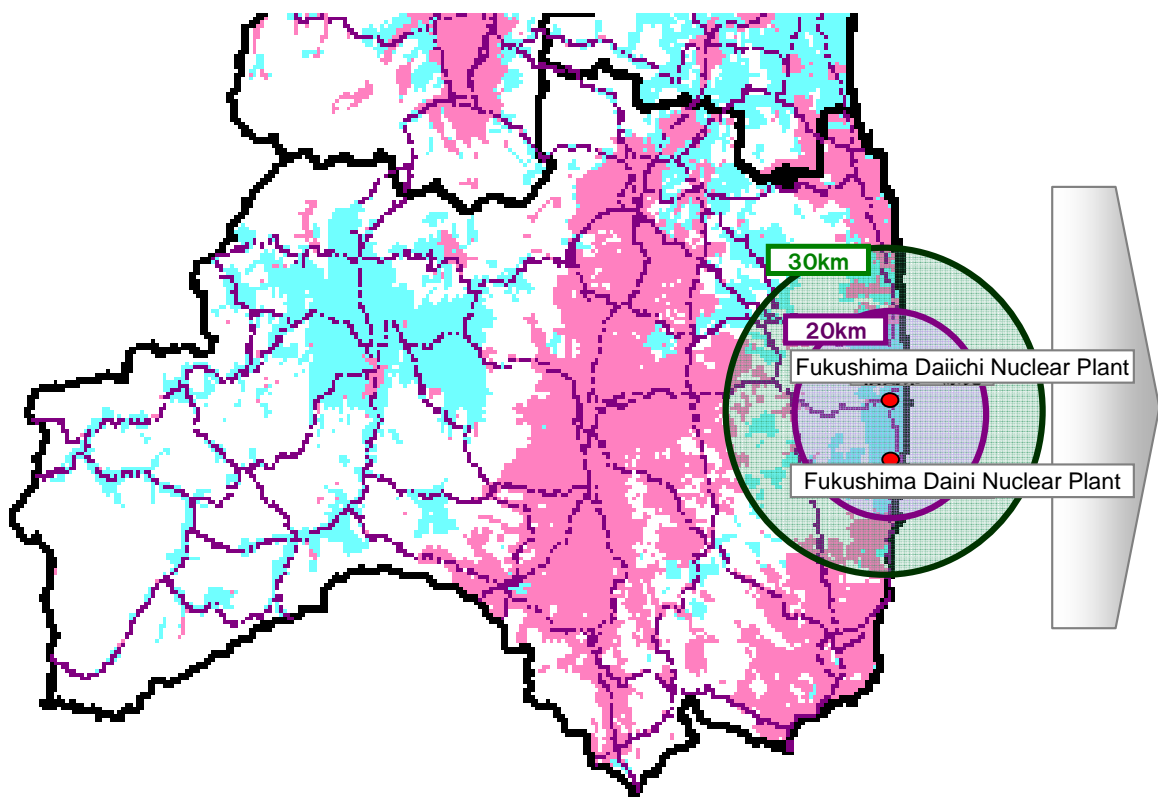
4:00 a.m. on Monday, March 28



Service available  
Service disrupted

6:00 p.m. on Sunday, March 13

4:00 a.m. on Monday, March 28



Service available  
Service disrupted