

Corporate Information

As of March 31, 2011

Company Name

NTT DOCOMO, INC.

Address

Head Office:

11-1, Nagata-cho 2-chome, Chiyoda-ku, Tokyo 100-6150, Japan
Tel: +81-3-5156-1111

Date of Establishment

August 1991

Capital

¥949,679,500,000

Fiscal Year-End

March 31

Number of Employees (Consolidated)

22,954

Corporate Web Site

<http://www.nttdocomo.co.jp/english/>

IR Information:

<http://www.nttdocomo.co.jp/english/corporate/ir/>

Independent Registered Public Accounting Firm

KPMG AZSA LLC (the Japan member firm of KPMG International)

IR Contact

NTT DOCOMO, INC. IR Department

11-1, Nagata-cho 2-chome, Chiyoda-ku, Tokyo 100-6150, Japan

Tel: +81-3-5156-1111

Fax: +81-3-5156-0271

Stock Information

As of March 31, 2011

Stock Listings

Tokyo Stock Exchange, First Section listed October 1998
(Securities code: 9437)
New York Stock Exchange listed March 2002
(Ticker symbol: DCM)
London Stock Exchange listed March 2002
(Ticker symbol: NDCM)

Transfer Agent

Mitsubishi UFJ Trust and Banking Corporation,
Corporate Agency Department
4-5, Marunouchi 1-chome, Chiyoda-ku, Tokyo 100-8212, Japan
Tel: +81-3-3212-1211

Depository for American Depositary Receipts ("ADRs")

The Bank of New York Mellon Corporation
101 Barclay Street, New York, NY 10286, U.S.A.
U.S. Callers: (888) BNY ADRS
Non-U.S. Callers: +1-201-680-6825

Principal Shareholders

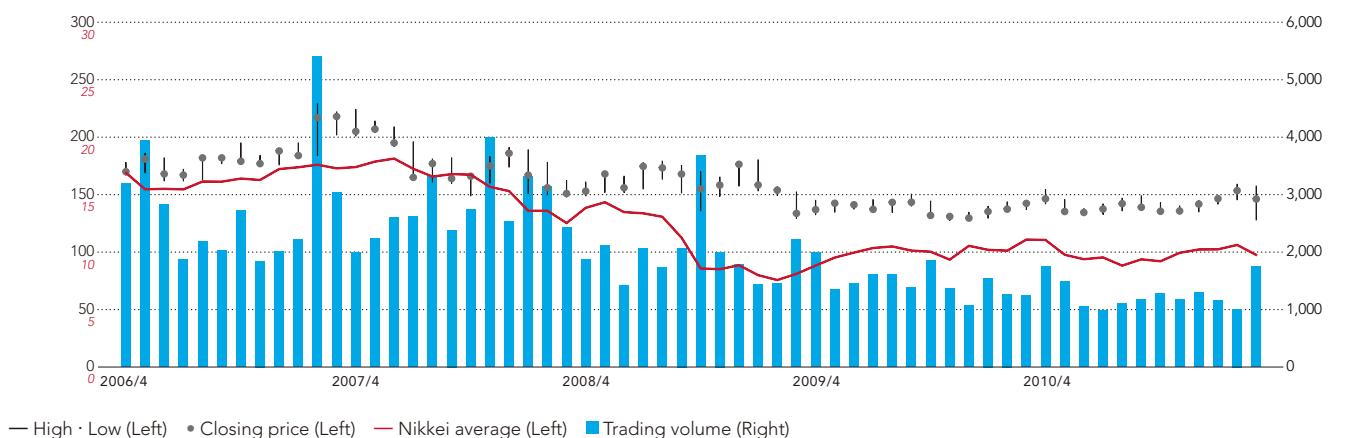
	Number of Shares Held	Percentage of Total Issued Shares (%)
NIPPON TELEGRAPH AND TELEPHONE CORPORATION	27,640,000	63.32
JAPAN TRUSTEE SERVICES BANK, LTD. (TRUST ACCOUNT)	1,054,153	2.42
THE MASTER TRUST BANK OF JAPAN, LTD. (TRUST ACCOUNT)	978,740	2.24
STATE STREET BANK AND TRUST COMPANY	314,071	0.72
SSBT OD05 OMNIBUS ACCOUNT—TREATY CLIENTS	308,206	0.71
JAPAN TRUSTEE SERVICES BANK, LTD. (TRUST ACCOUNT 9)	273,254	0.63
THE BANK OF NEW YORK MELLON AS DEPOSITARY BANK FOR DEPOSITARY RECEIPT HOLDERS	180,564	0.41
STATE STREET BANK AND TRUST COMPANY 505103	170,746	0.39
STATE STREET BANK AND TRUST COMPANY 505225	162,598	0.37
MELLON BANK N.A. AS AGENT FOR ITS CLIENT MELLON OMNIBUS US PENSION	152,861	0.35
Total	31,235,193	71.6

* The Company's holding of treasury stock (2,182,399 shares equivalent to 5.00% of the total number of issued shares) is not included in the above.

Stock Price and Trading Volume

Stock price/Nikkei average stock price
(Thousands of yen)

Trading volume
(Thousands of shares)



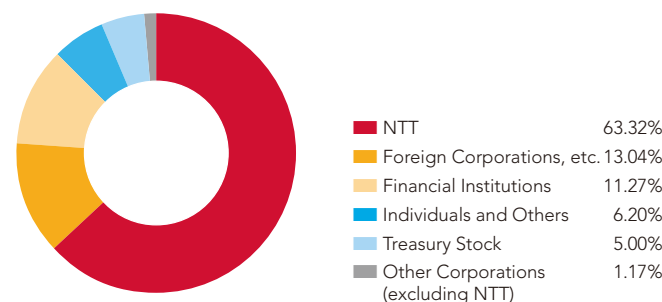
Number of Shares

Total Number of Authorized Shares: 188,130,000
Total Number of Issued Shares: 43,650,000

Number of Shareholders

315,544

Distribution of Ownership among Shareholders



* The figures are based on the list of shareholders and records of actual share ownership as of March 31, 2011.